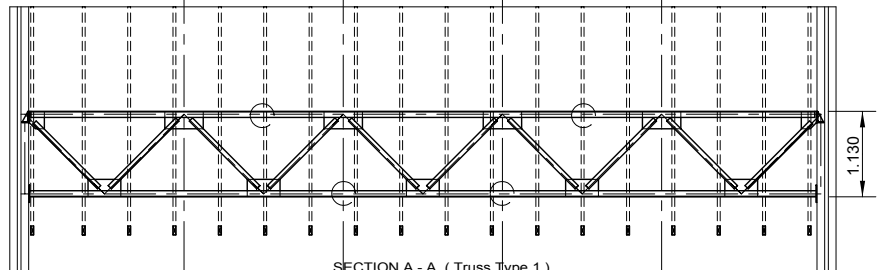
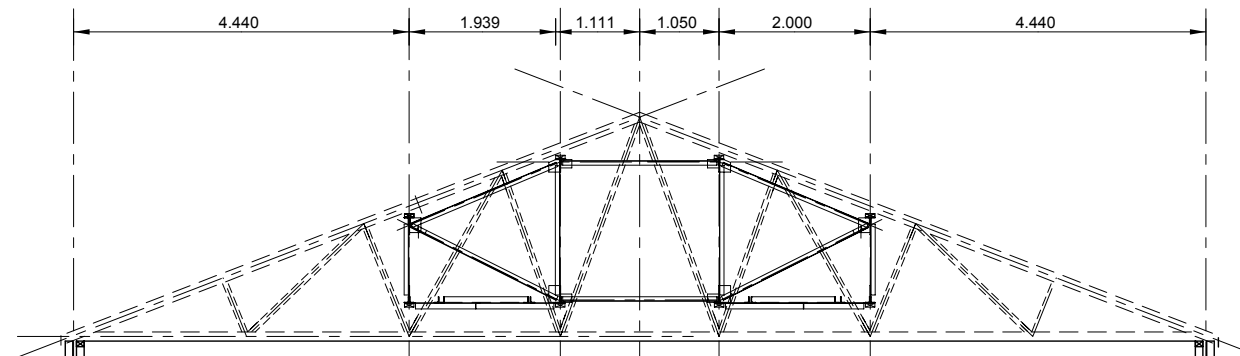
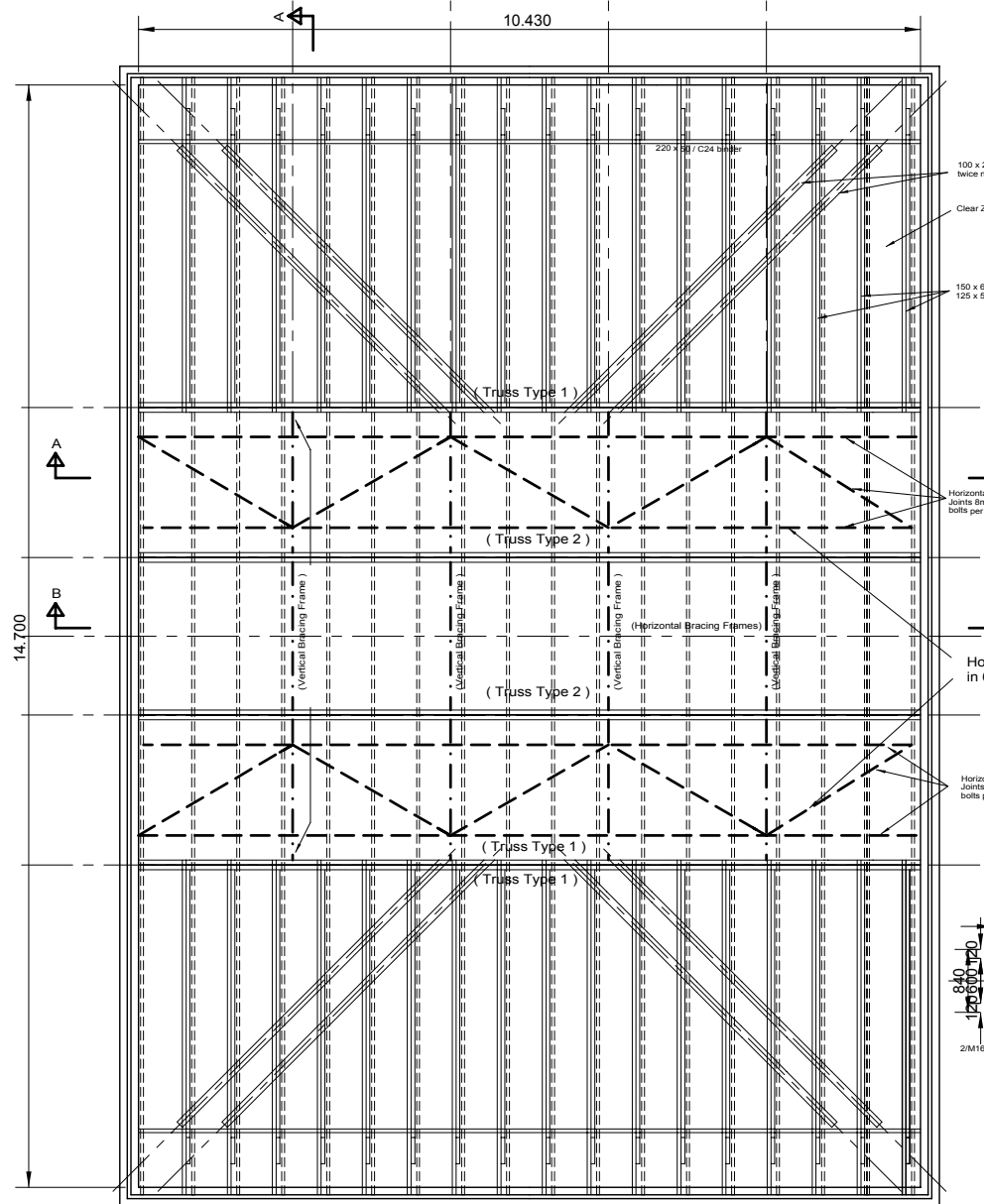


SECTION B - B (Truss Type 2)
For Large Scale Details of Typical Longitudinal Bracing Frame Refer Drg. 2167/2



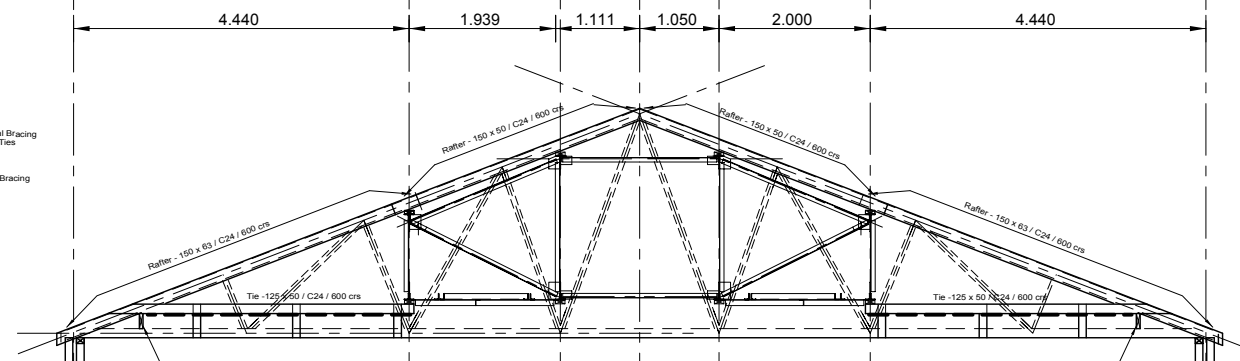
SECTION A - A (Truss Type 1)



For Large Scale Details of Typical Vertical Bracing Frame Refer Drg. 2167/3

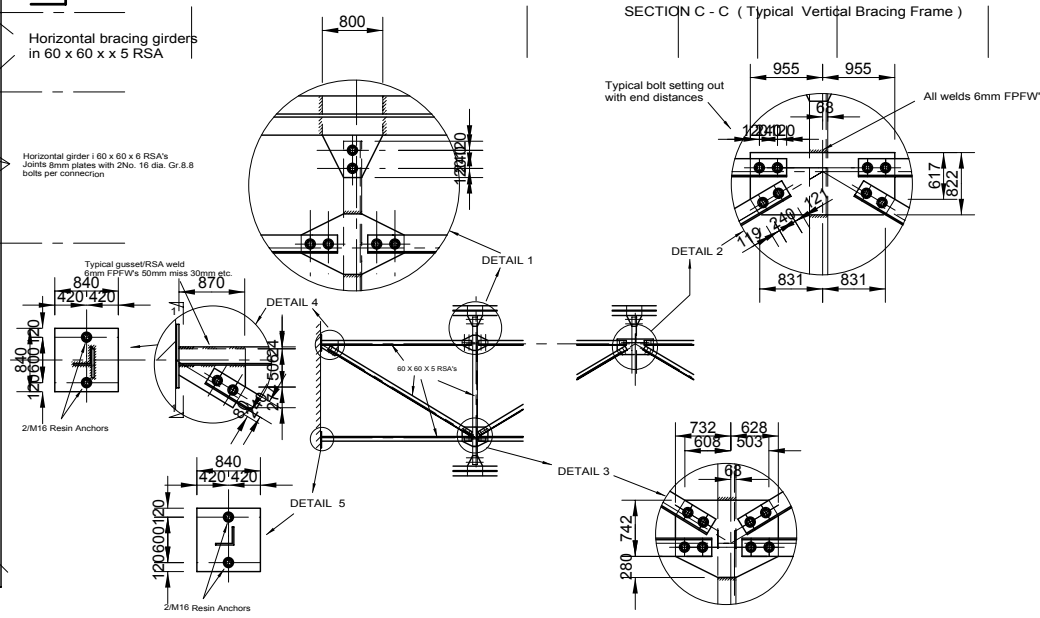
SECTION C - C (Typical Vertical Bracing Frame)

All details symmetrical about centre line



For Large Scale Details of Typical Vertical Bracing Frame Refer Drg. 2167/3

SECTION C - C (Typical Vertical Bracing Frame)



NOTE - ALL DIMENSIONS ARE TO BE CHECKED ON SITE FOR VERIFICATION OR AMENDMENT AS REQUIRED IN ORDER FOR THE FRAMES TO BE POSITIONED TO ACHIEVE THE SPECIFIED TOP PLATE SETTING OUT.
Steelwork to be fabricated to site measurements

- NOTES
1. This drawing is to be read in conjunction with all relevant architects Engineers and specialists drawings.
 2. New timber to be supplied in stress grade C24.
 3. All dimensions marked thus "" are dependent upon site dimensions and are to be verified on site prior to the manufacture of components.
 4. Concrete in foundations to be Grade C25.
 5. Foundation founding stratum to be approved by the Building Inspector.
 6. New blockwork to be 3.5N / 1:1:6 mortar

| Date | Details | Initials |
|------|---------|----------|
| | | |
| | | |
| | | |

TCL Consulting Limited Established 1988
Consulting Structural and Civil Engineers
33, St. Cuthbert Street
WELLS
Somerset
BA5 2AW
Tel: 01749 678148
Fax: 01749 678216
e-mail: mail@tcl-consulting.co.uk
www.tcl-consulting.co.uk

PROJECT

Drawing Title
**New Roof to Snooker Hall
Steelwork Details**

| Scale | Date | Drawn By | Checked By |
|----------------------------|---------|----------|------------|
| 1:50, 1:25, 1:12.5, 1:6.25 | Feb2005 | TRC/CAD | |

Client

| Project No. | Drawing No. | Revision |
|-------------|-------------|----------|
| | | |

This drawing and the building works shown are the copyright of TCL Consulting Limited and may not be reproduced in part or in whole or amended except by written permission. No liability will be accepted for amendments made by other persons.